

BYARM-181-PC

ARM-based Panel PC
ARM-Based All-in-One Panel PC
with NXP i.MX6 Cortex Processor

BYARM Series **18.5"**



I/O View



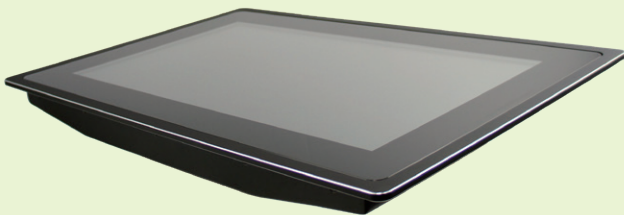
BYARM-181-PC



Features

- NXP i.MX6 high performance processor
- Projected capacitive touch screen, flat bezel design

- 12V DC and PoE supports
- Programmable LED light bar (rear)
- External SD card slot for storage expansion
- Supports Android 4.3x



BYARM-181-PC

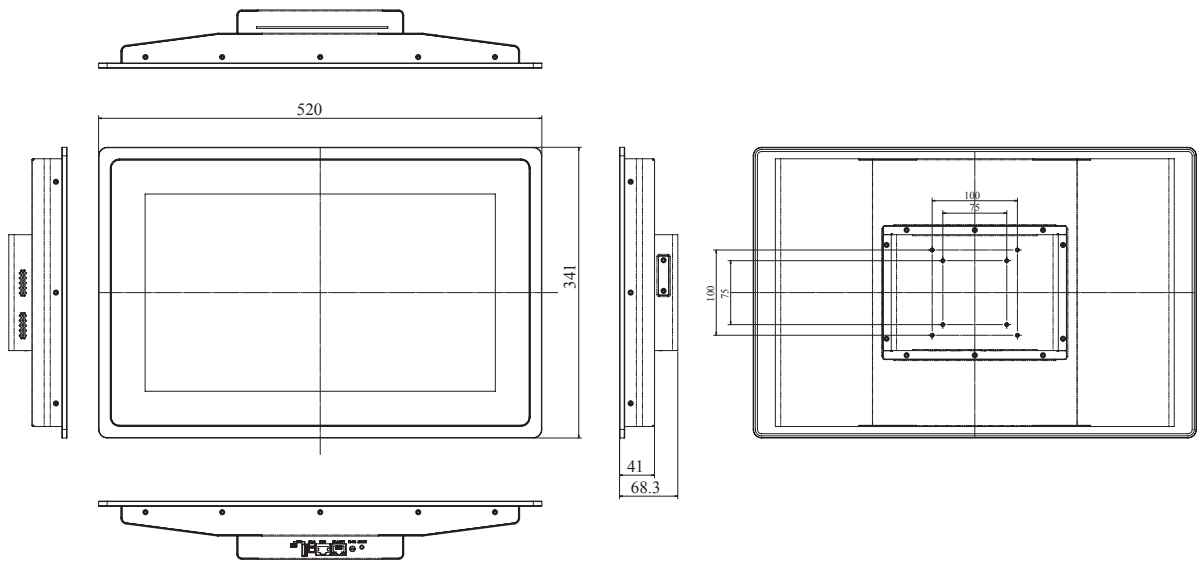
Specifications

Model No.	BYARM-181-PC	
Display & Touch Screen	Display Size	18.5" TFT-LCD
	Max. Resolution	1366 x 768
	Luminance (cd/m2)	300
	Contrast	1000:1
	Max. Color	16.7M
	View Angle (H°/V°)	170/160
	Backlight Lifetime(hrs)	50000
	Touch Type	Projected capacitive
	Touch Interface	USB
	Light Transmission (%)	85
	Point of touch	2
I/O Interface	USB 3.0	0
	USB 2.0	1x USB (USB Host, A-Type) (Flag type) 1x USB OTG (mini AB type)
	RS-232/422/485 Selectable in BIOS	1
	RS-232	0
	LAN	1x GbE
	Additional Graphics	None
	Audio	None
	Digital I/O	None
	Power Connector	Power jack
	Power Button	Reset button
Mechanical	Dimensions (mm)	520 x 341 x 68.3
	Net Weight (kgs)	6.1
System	Processor	NXP i.MX6 Cortex A9 Solo 1 Core @ 1GHz
	Memory	1GB DDR3 on board
	Thermal Design	Fanless
	Membrane Control	None
	Built-in Speaker/MIC	2x speaker
Expansion	Internal Expansion Bus	1x Mini PCI-E slot (full/half size)
	Expansion Slot	None
	Wireless	Optional Wi-Fi/BT
Storage Space	HDD	4GB eMMC on board
	Removable	1x SD slot
Power	Power Input Range	12V DC / PoE+
Construction	Chassis Material	Black aluminum front bezel and black steel back cover
	Color (Front/Back)	Black / Black
	IP Rating	IP65 front bezel
	Mounting	VESA 75x75, 100x100 mm
Environmental	Operating Temperature	0°C~50°C
	Storage Temperature	-20°C~60°C
	Storage Humidity	10%~90% (non-condensing)
	Certification	CE/FCC Class-B
	Supported Operating Systems	Android 4.3

BYARM-181-PC

Dimensions

BYARM-181-PC



Ordering Information

BYARM-181-PC	18.5" (1366 x 768) Panel PC with projected capacitive touch, with IB102 i.MX6 Cortex A9 CPU, 1GB DDR3 on board, Android supports, w/ 60W power adaptor
--------------	--