

ASTUT-W155-PC1S

Heavy-duty Industrial Panel PC

All-in-One Panel PC with 7th/6th Gen Intel® Core™ i5 Processor and Riser Card Expansion

ASTUT Series

15.6"



I/O View



ASTUT-W155-PC1S



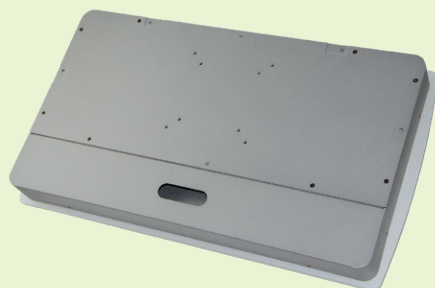
TAIWAN
EXCELLENCE
2016

Features

- Optional digitizer touch pen supports
- Optional wireless communication
- Full flat bezel design



- I/O cover for cable arrangement
- Aluminum housing, perfect thermal design



- With riser card expansion slot supports
- PCI-E (x4) for ASTUT-W155-PC1S



- 12V~24V DC wide-range power input



ASTUT-W155-PC1S

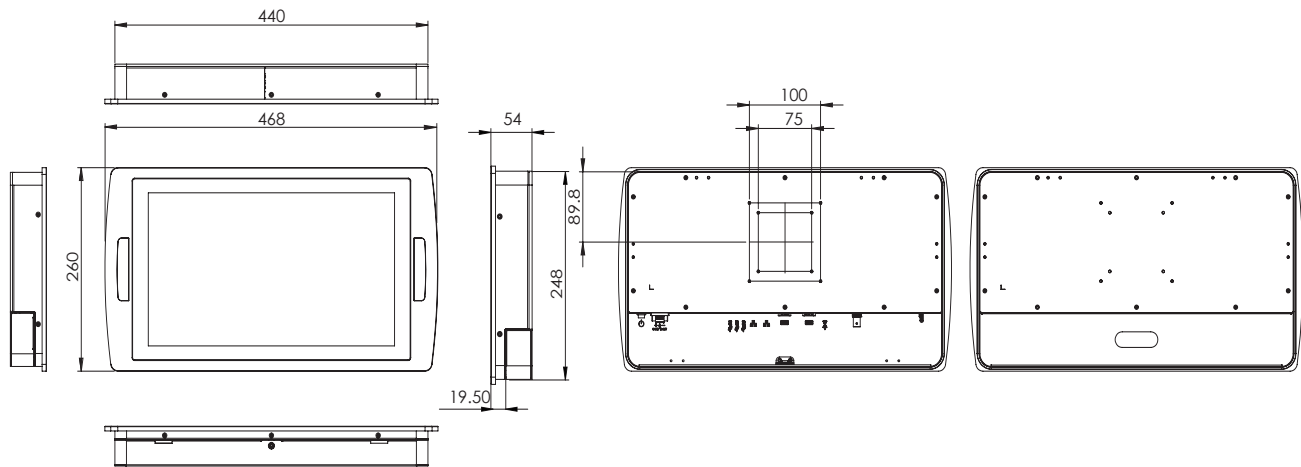
Specifications

Model No.	ASTUT-W155-PC1S	
Display & Touch Screen	Display Size	15.6" TFT-LCD
	Max. Resolution	1366 x 768
	Luminance (cd/m ²)	300
	Contrast	500:1
	Max. Color	16.7M
	View Angle (H°/V°)	160/160
	Backlight Lifetime(hrs)	50,000
	Touch Type	Projected capacitive
	Touch Interface	USB
	Light Transmission (%)	85
	Point of touch	2
I/O Interface	USB 3.0	4
	USB 2.0	0
	RS-232/422/485 Selectable in BIOS	1
	RS-232	RS-485 only
	LAN	2x GbE
	Additional Graphics	1x HDMI
	Audio	None
	Digital I/O	None
	Power Connector	3-pin terminal block
	Power Button	Rock switch
Mechanical	Dimensions (mm)	468 x 260 x 54
	Net Weight (kgs)	7
System	Processor	Intel® Core™ i5-6300U 2.4GHz Intel® Core™ i5-7300U 2.4GHz
	Memory	2x DDR4 2133 SO-DIMM, up to 16GB, default 4GB
	Thermal Design	Fanless
	Membrane Control	None
	Built-in Speaker/MIC	None
Expansion	Internal Expansion Bus	1x Mini PCI-E Half/Full size 1x M.2 22x30
	Expansion Slot	1x PCI-E(x4)
	Wireless	Optional Wi-Fi/BT/LTE/3G/RFID
Storage Space	HDD	1x 2.5" M.2 22x80 default 64GB Optional 2.5" HDD
	Removable	None
Power	Power Input Range	12V~24V DC
Construction	Chassis Material	Aluminum silver
	Color (Front/Back)	Silver / Silver
	IP Rating	IP65 front bezel
	Mounting	Panel mount and VESA 75x75, 100x100 mm
Environmental	Operating Temperature	0°C ~ 50°C
	Storage Temperature	-20°C ~ 60°C
	Storage Humidity	10%~90% (non-condensing)
	Certification	CE/FCC Class-B and LVD
	Supported Operating Systems	Windows 10, Windows 8.1 64-bit Windows 7 (Intel® Core™ i5-6300U 2.4GHz SKU only)

ASTUT-W155-PC1S

Dimensions

ASTUT-W155-PC1S



Ordering Information

ASTUT-W155-PC1S-K73	15.6" (1366 x 768) Panel PC with IBP-900, 7th Gen Intel® Core™ i5 7300U processor, 64GB M.2 SSD, PCI-E(x4) riser card, projective touch screen, 12V~24V DC power input, w/o power adaptor
ASTUT-W155-PC1S-S63	15.6" (1366 x 768) Panel PC with IBP-900, 6th Gen Intel® Core™ i5 6300U processor, 64GB M.2 SSD, PCI-E(x4) riser card, projective touch screen, 12V~24V DC power input, w/o power adaptor
Power adaptor (Optional)	AC 90V~240V input, 12V DC output 84W power adaptor, IBASE P/N: A005PS084W0050000P